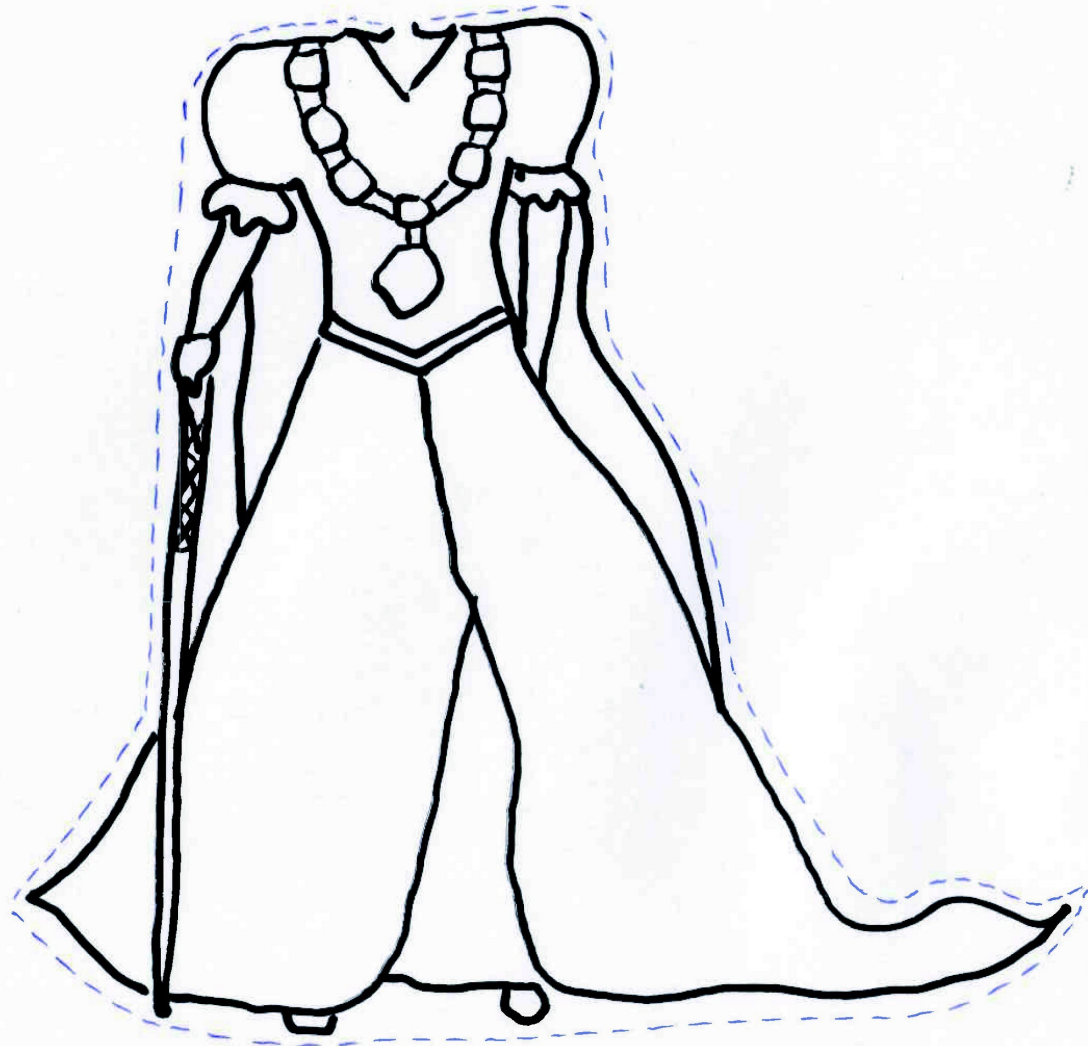


WHEN WE APPOINT THE ARMENGOLA,
A BRAVE WOMAN FROM ORIOLA.

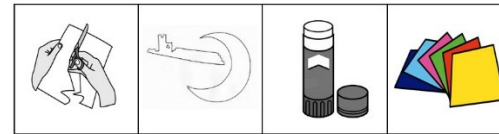




SUGGESTIONS:

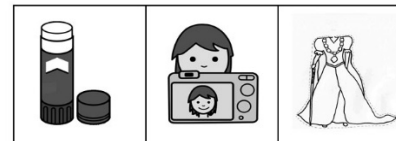
COLLAGE

-Cut out the printed moon on a yellow Bristol board.



-Cut out the printed castle on a brown or gold Bristol board.

-Colour, cut out and glue the face of a female classmate on the Armengola.



-Make a collage on a black Bristol board.